

2006 Bench Jewelers Passion Award Design Competition

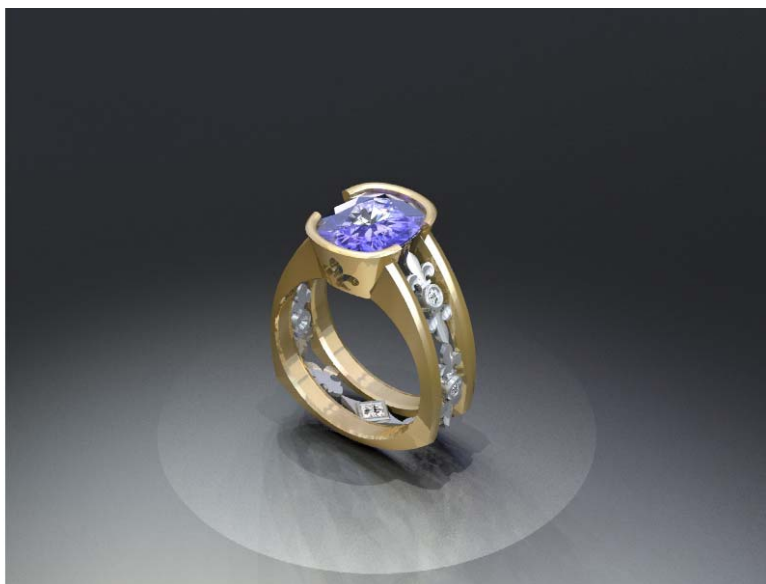
CAD Rendering Division
Ladies Rings

1st Place
Tom McLaughlin



14k white gold ring set with 3/4ct pear shaped pink sapphire 1-.50ct round diamond 2-1/3ct round diamonds and 24-.02ct round diamonds on the sides.

2nd Place
Joel McFadden



Cushion Cut Tanzanite bezel set in 18 KT yellow gold with Platinum accents. There are four 3 mm and one 2 mm Princess cut diamonds.